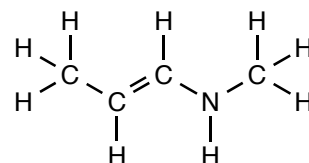
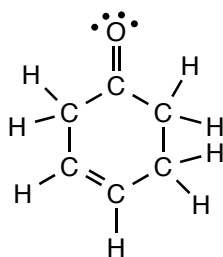
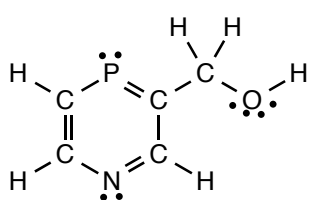
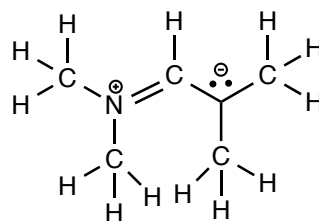
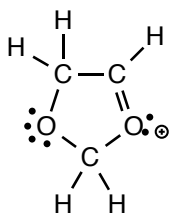
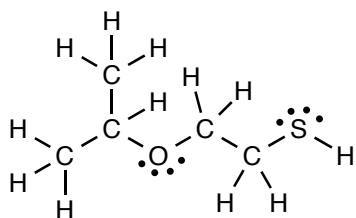


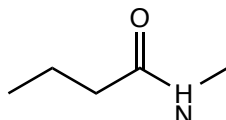
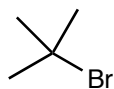
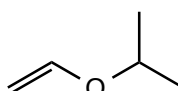
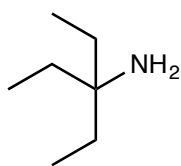
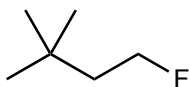
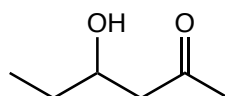
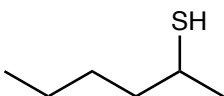
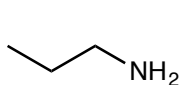
Chapter 2 Practice Problems

Solutions

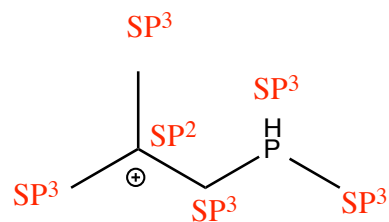
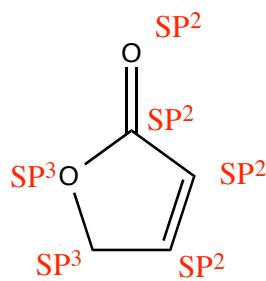
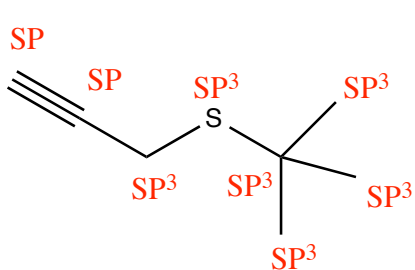
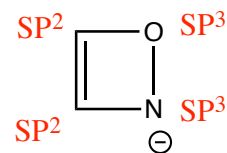
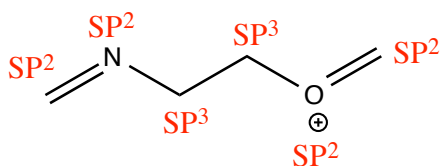
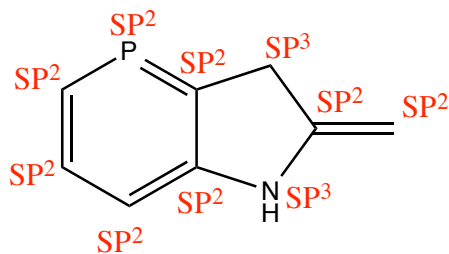
1



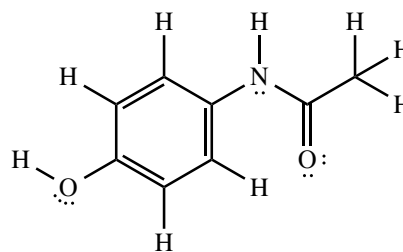
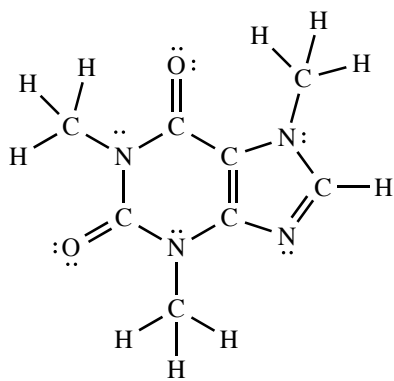
2



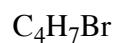
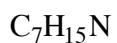
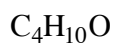
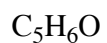
3



4



5



6

C 5 x 12 = 60

H 6 x 1 = 6

O 1 x 16 = 16

MW = 82 g/mol

C 4 x 12 = 48

H 10 x 1 = 10

O 1 x 16 = 16

MW = 74 g/mol

C 7 x 12 = 84

H 15 x 1 = 15

N 1 x 14 = 14

MW = 113 g/mol

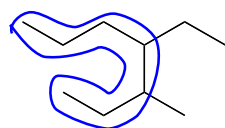
C 4 x 12 = 48

H 7 x 1 = 7

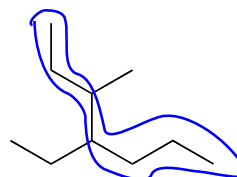
Br 1 x 80 = 80

MW = 135 g/mol

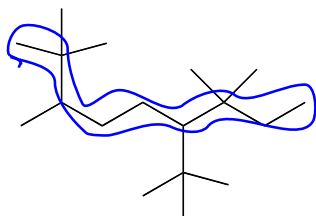
7



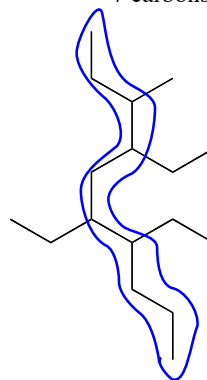
7 carbons



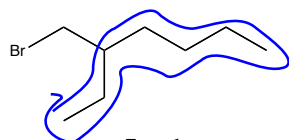
7 carbons



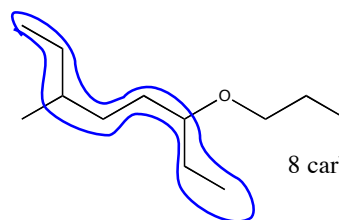
9 carbons



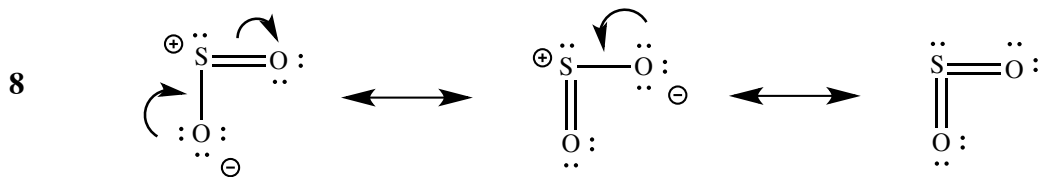
10 carbons



7 carbons



8 carbons



- since the sulfur atom is always has a steric number of 3, it is SP^2 hybridized in every structure

