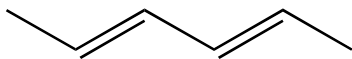
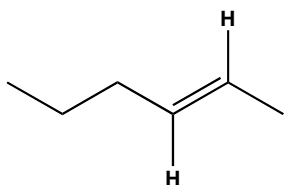


Conjugated, isolated or cumulated diene?

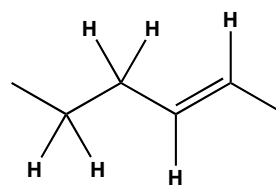


This is a conjugated diene

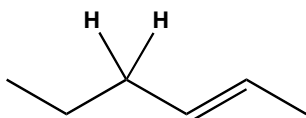
Type of protons?



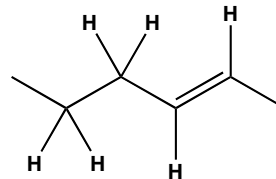
Which protons are VINYL?



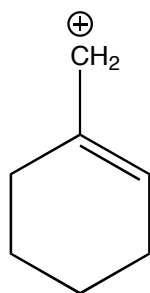
Type of protons?



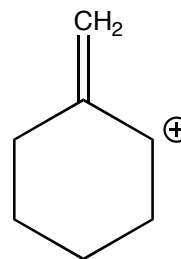
Which protons are ALLYLIC?



Resonance form?



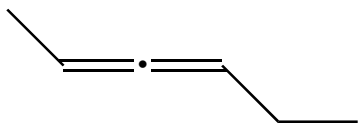
Resonance form?



Order of stability of carbocations?

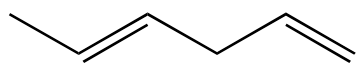
allylic > 3° > 2° > 1° > methyl >> vinyl

Conjugated, isolated or cumulated diene?

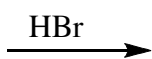
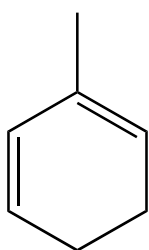


This is a cumulated diene

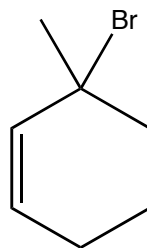
Conjugated, isolated or cumulated diene?



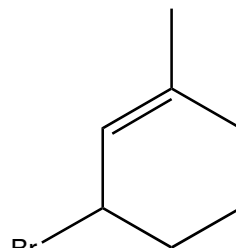
This is an isolated diene



1,2- and 1-4
addition
products?



1,2-addition



1,4-addition

1,2-Addition products of dienes are formed faster and are considered to be the _____ product

1,2-Addition products of dienes are formed _____ and are considered to be the kinetic product

1,4-Addition products of dienes are formed slower and are considered to be the _____ product

1,4-Addition products of dienes are formed _____ and are considered to be the thermodynamic product